

Service Description

Proteome profiling analysis refers to the analysis of an entire proteome from complex samples like complete cells, tissues and body fluids. It is most often used to identify as many peptides and proteins as possible. Proteome profiling analysis based on mass spectrometry (MS) can provide reference information for high-throughput quantitative proteomics and protein modification analysis.

At present, proteome profiling analysis mainly includes two separation methods. The first is the sodium dodecyl sulfate polyacrylamide gel electrophoresis (SDS-PAGE) method based on protein molecular weight. The second is the reversephase high performance liquid chromatography (RP-HPLC) method based on peptide hydrophobicity.

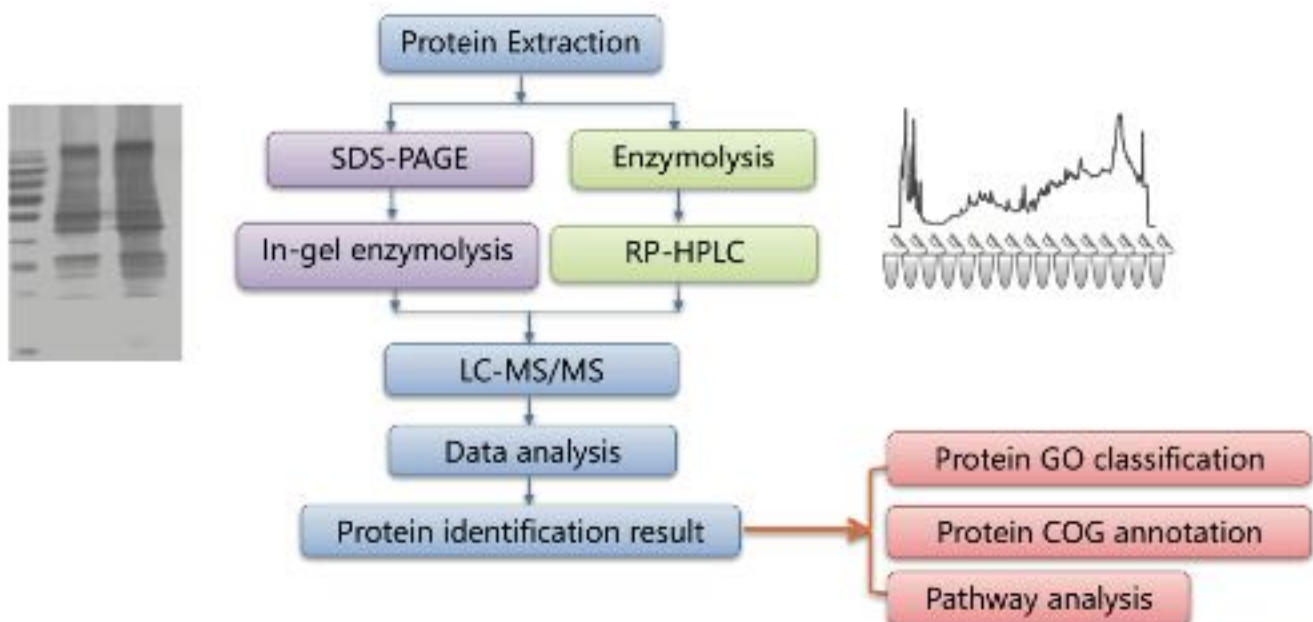
We have an extensive experience in the field of Proteome Profiling with well-developed and reliable workflows using market-leading technologies, and a bioinformatics infrastructure.

Research Applications



- Regulation mechanism of protein expression in the development of diseases
- Plant and animal growth and development research
- Stress resistance and disease resistance mechanism study

Proteome Profiling Analysis Workflow

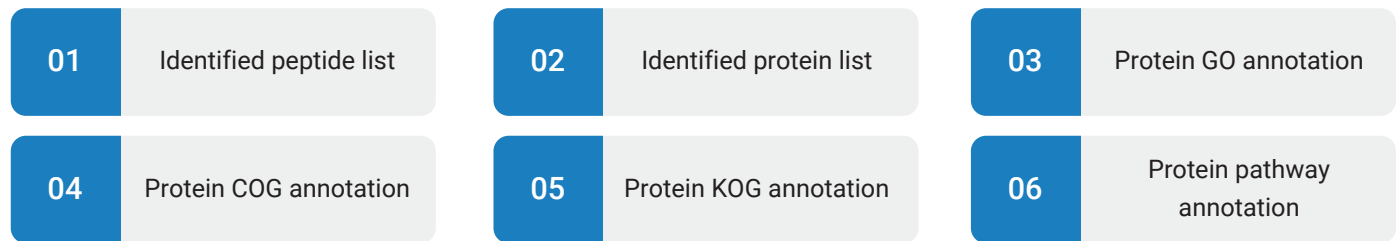


Service Advantages

<p>Efficient Sample Separation</p>	<p>High Identification Rate</p>	<p>Wide Range of Applications</p>
<p>Choose from SDS-PAGE or RP-HPLC separation methods according to the sample nature</p>	<p>High resolution and high mass precision MS platforms can identify 12,000 different proteins</p>	<p>No species-specific restrictions</p>

Bioinformatics Analysis Workflow

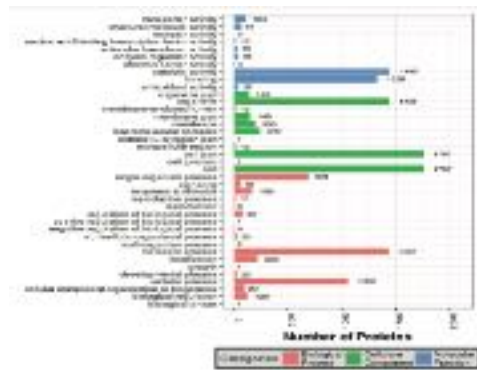
Standard:



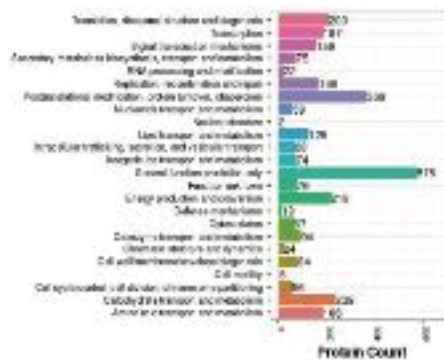
Customized Solutions:

Quantitative analysis of protein relative abundance in a single sample (iBAQ)

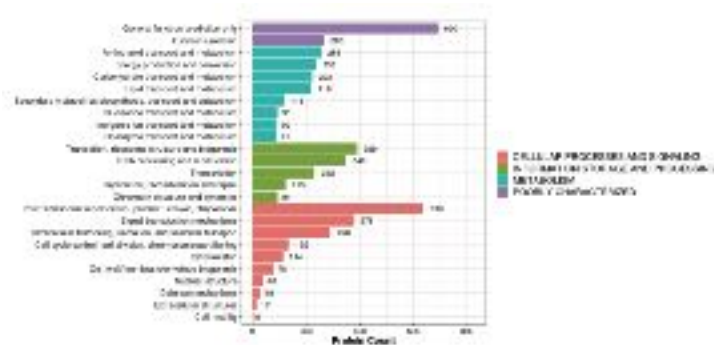
Examples of Protein Function Annotation



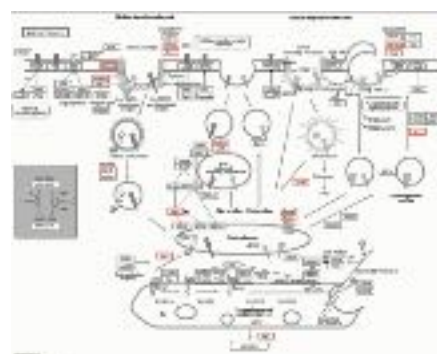
Protein GO Annotation



Protein COG Annotation



Protein KOG Annotation



Protein pathway annotation

General Sample Requirements

	SAMPLE TYPE	AMOUNT	
		RECOMMEND	MINIMUM
Animal	Animal internal organs (heart, liver, spleen, lung, kidney), skin, muscle, brain, etc	≥ 10 mg	≥ 5 mg
	Mollusks (Toxoplasma, Schistosomiasis, Drosophila, Acarid, Plutella xylostella, Laodelphax, Cestode, Cicada, Hematodinium, etc.)	≥ 10 mg	≥ 5 mg
Cell	Suspended cells, adherent cells	≥ 1×10 ⁷	≥ 1×10 ⁶
	Cell culture supernatant	≥ 20 mL	
Exosome	Exosome isolated by customer	≥ 100 µg, ≥ 0.5 µg/µL	
Fluid	Plasma, serum (remove highly-abundant protein)	≥ 200 µL	≥ 200 µL
	Amniotic fluid, cerebrospinal fluid, semen, etc. (remove highly-abundant protein)	≥ 1 mL	≥ 500 µL
	Amniotic fluid, cerebrospinal fluid, semen, etc. (with highly-abundant protein)	≥ 200 µL	≥ 100 µL
	Saliva, milk	≥ 200 µL	≥ 100 µL
	Urine	≥ 50 mL	≥ 20 mL
	Tear	≥ 25 µL	≥ 20 µL
Plant	Twigs of plants (leaf buds, tender leaves), algae	≥ 500 mg	≥ 250 mg
	Old leaves, roots, stems, bark of plants	≥ 1 g	≥ 500 mg
	Plant buds, pollen	≥ 100 mg	≥ 50 mg
	Plant seeds (rice/wheat seeds, etc.), fruits (apples, peaches, pears)	≥ 1 g	≥ 500 mg
Microorganism	Prokaryotic bacteria (E. coli, Staphylococcus aureus, etc.), fungi (yeast, etc.)	Thallus ≥ 50 mg cells ≥ 5×10 ⁶	
Protein solution	Complex protein solution, protein powder	≥ 200 µg, ≥ 0.5 µg/µL	≥ 100 µg, ≥ 0.5 µg/µL
Others	Feces	≥ 500 mg	≥ 100 mg

Turn Around Time

4-5 weeks



To learn more

If you have any questions or would like to discuss how our services can help you with your research, please don't hesitate to contact us at P_contact@innomics.com. We look forward to hearing from you!

Innomics Inc.
750 N. Pastoria Ave
Sunnyvale, CA 94085
USA

For Research Use Only. Not for use in diagnostic procedures (except as specifically noted).

Copyright© Innomics Inc. 2023. All trademarks are the property of Innomics Inc. or their respective owners. This material contains information on products targeted to a wide range of audiences and could contain product details or information otherwise not accessible or valid in your country. Please be aware that we do not take any responsibility for accessing such information, which may not comply with any legal process, regulation, registration, or usage in the country of your origin. Please get in touch with a representative for regional availability. The company reserves the right of final interpretation.